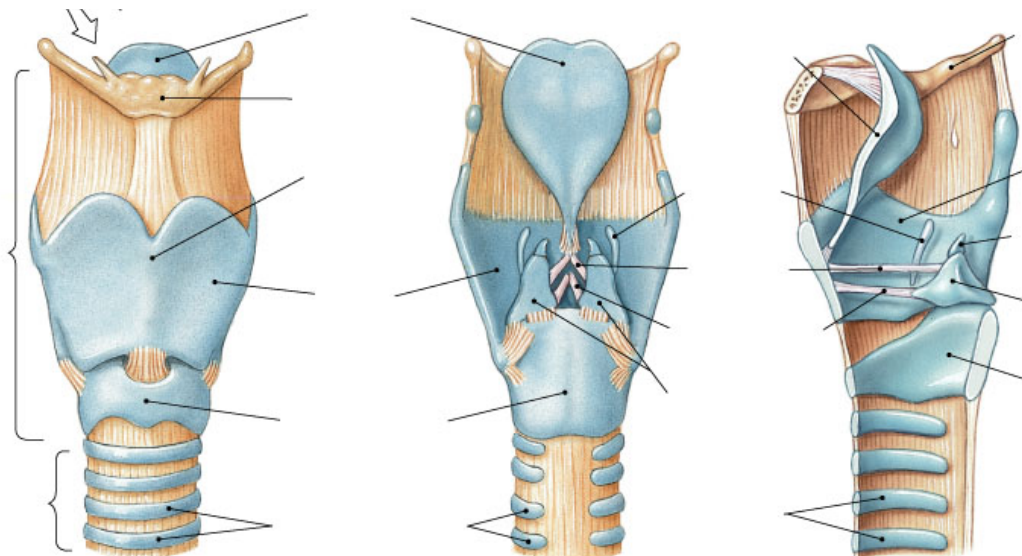


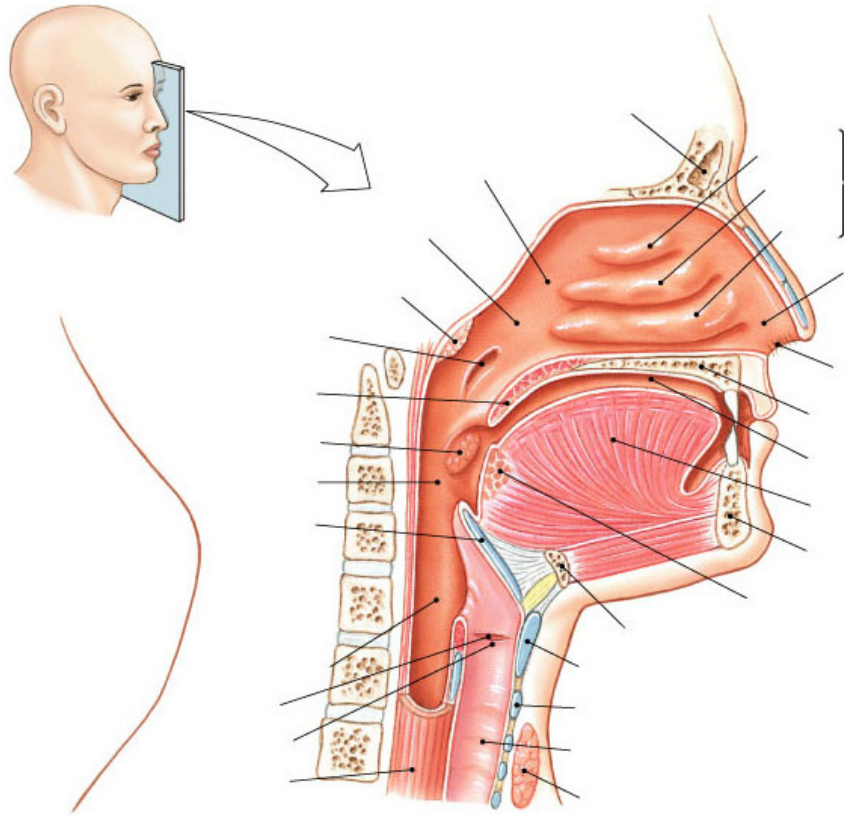
Chapter 22 Respiratory System

1. What are the functions of the respiratory system?
2. Describe the four process in respiration.
3. What is the function of the following organs of the respiratory system:
 - a. Nose, nasal cavity, paranasal sinuses
 - b. Pharynx (three divisions), larynx (three functions), trachea
 - c. Bronchi, bronchiole
 - d. Lungs, alveoli
4. Define conducting zone, and respiratory zone. Which organs listed above fall under the conducting zone, and respiratory zone.
5. What is the function of the nasal choanae.
6. Describe the two types of mucosa found along the respiratory tract. What is their cellular composition? What is the function of each type of mucosa? What is the function of cilia?
7. Describe the function of the goblet cells.
8. Describe the function of the following structures found in the larynx: Thyroid cartilage, laryngeal prominence, true vocal cord, false vocal cord, epiglottis, arytenoids cartilage.
9. Why does the voice in males change during puberty?
10. What are the tissue types found in the trachea?
11. What is the difference between an alveoli, and an alveolar sac?
12. Describe the bronchial tree, beginning with the trachea, and end with the terminal bronchioles.
13. What is meant by respiration, ventilation, gas exchange?
14. Know the anatomy and physiology (what we discussed in class) of the respiratory organs (such as nose, larynx, lungs, trachea, bronchi, alveoli).
15. What is the type of tissue that makes the alveoli. What is the function of cuboidal cells present in the respiratory zone?
16. How many lobes make up the left and right lungs?
17. Describe the following: cardiac notch, and hilus
18. Understand the mechanisms involved in breathing (ventilation) – inspiration vs expiration, how does pressure determine the movement of air. How do we control the pressure changes in our thoracic cavity?

Label the following: Thyroid cartilage, laryngeal prominence, true vocal cord, false vocal cord, epiglottis, arytenoids cartilage



Label the following: Superior concha, middle concha, inferior concha, nostril, nasopharynx, oropharynx, laryngopharynx, true vocal cord, false vocal cord, epiglottis, trachea



TRUE/FALSE

1. Air passes down the trachea to the two bronchi which, along with blood vessels, enter the right and left lungs at the hilum.
2. The right lung has two lobes.
3. Immediately behind the nasal cavity is the the oropharynx.

MATCHING

- A. Larynx
 - B. Oro-pharynx
 - C. Nasal pharynx
 - D. Laryngeal pharynx.
 - E. None of these
4. Associated with cricoid cartilage.
 5. Associated with external nares.

MULTIPLE CHOICE

6. A decrease in thoracic volume is associated with this.
 - A. Expiration
 - B. Inspiration
 - C. Both of these
 - D. None of these